



Powered by **memjet**

FAST • ON-DEMAND • IMPROVED WATER RESISTANT

The VP750 by VIPColor is the next generation of digital print-on-demand colour label printer with **Enhanced Water Resistance Print Technology**¹

Building on the proven technology of our bestselling VP700, it utilises Enhanced Water Resistance Print Technology¹ that produces vibrant coloured labels. The result is great looking colour labels that are suitable for Chilled Food & Beverage, Animal Care, Cleaning products, Chemicals, Pharmaceutical products and most moisture exposed products.

The VP750 combines the performance and reliability of VIPColor VP700 industrial colour label printers, with the new improved inks system that gives **better water (and many solvent) resistant labels**, compared to other dye ink printers and longer lasting printhead versus first generation of Memjet printers. Ruggedly designed yet intuitive for in-house label production and private labelling needs, the **VP750 brings fast, affordable colour printing to any print environment.**

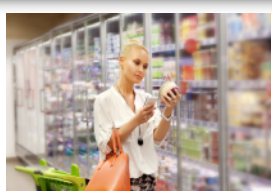


Enhanced Water Resistance Print Technology

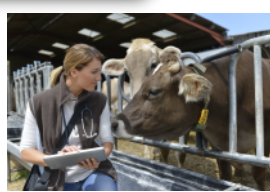
Key Benefits

- Digital colour label printer
- Up to 18 m/min print speed
- Up to 1600x1600 dpi resolution
- Ruggedized for industrial usage
- Enhanced Water Resistance Print Technology
- Longer lasting printhead

Key Markets



Refrigerated Food & Beverage



Animal Care & Veterinary products



Home Care & Cleaning products



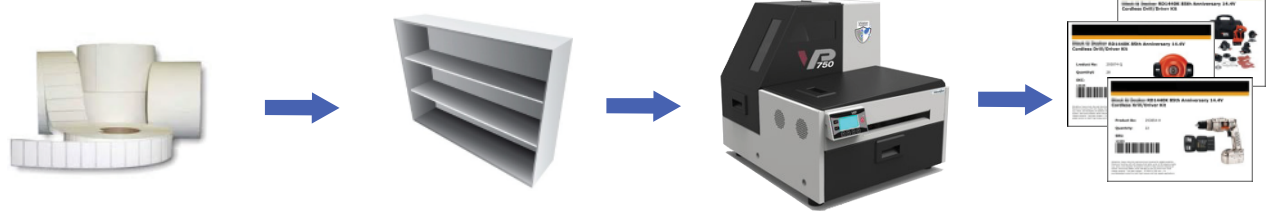
GHS & Chemical products



Pharmaceutical products, Body care & Medical Tests

Reduce the complexity, avoid obsolete labels, save time and money.

WITH VP750 LABEL PRINTER



- Order only blank label stock of different sizes.
- Receive and do minimal inspection.

- Inventoried in less storage shelf space.
- Easier to locate label stock.

- Reduces reloading of label stock and utilizes one printer only.

- Print on demand and change label design within minutes.



*For Memjet™ ink compatible label stock, we strongly recommend that the user perform a print check for compatibility before using the label stock for production, follow the recommendations from the manufacturer and the optimal printer settings. Compatible with synthetic and paper based label. However, the user is advised to conduct their own tests for compatibility prior to mass production.

